

LM CLIP-TILE®

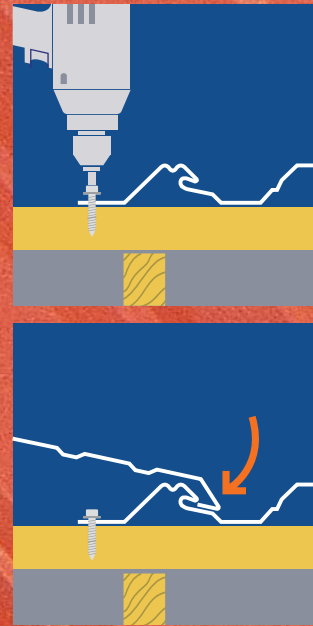
The roof covering
for new construc-
tion, renovated
buildings and

for wall
covering

Made from

Steel

Copper

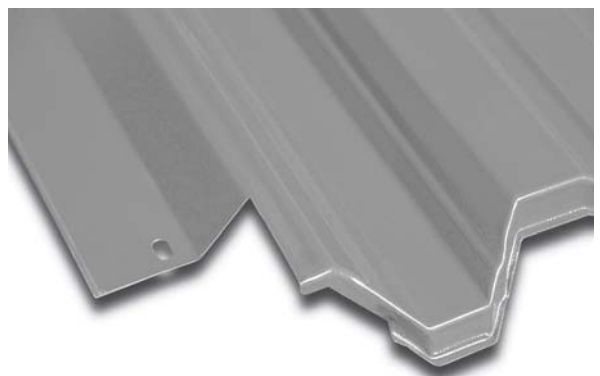


- ultra lightweight module tiles
- easy installation
- no visible fixing spots
- extremely weather resistant Purlux coating in 8 fashionable colours
- available off the shelf at your building materials dealer



Installation made easy:

Screw on,
hook on,
press down ...



LUXMETALL®
for roofing and cladding



The new roof tile panels with the "clip" are easy to install, and may even be installed on roofs with gentle slopes.

The module tiles may be clipped together, pressed onto the laths and screwed down without any need for special tools.

No need for big spending - even a DIY handyman will be able to cover the roof of a new building or restore one on an existing house. Easy lightweight tiles (935 x 530mm), with 6 different tile patterns, allow for safe and quick installation due to their patented clip-system.

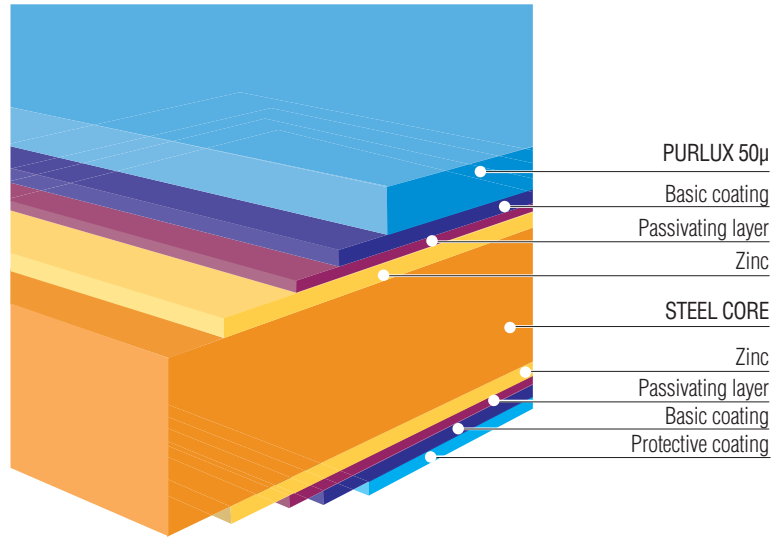
The fastening bolts are covered by the next tile module and are thus well protected. The surface, with its trend-setting Purlux-coating is extremely weather resistant: It is smooth, dirt repelling, scratch and corrosion proof, and will keep its perfect looks for many years to come.

BASE MATERIALS

- Steel core ST 37= (AC 280), warm galvanised (Z 275) or aluminium galvanised (AZ 150)
- Copper

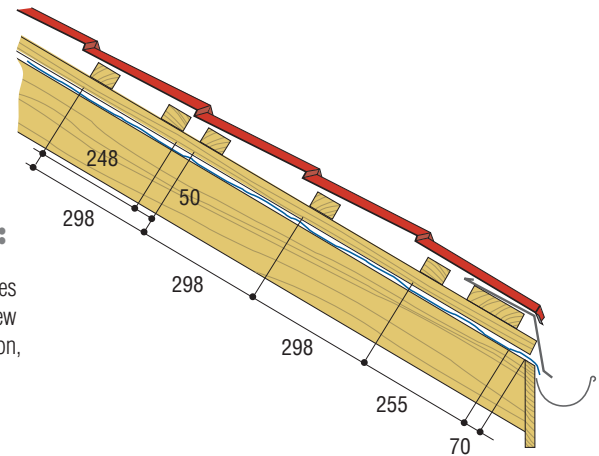


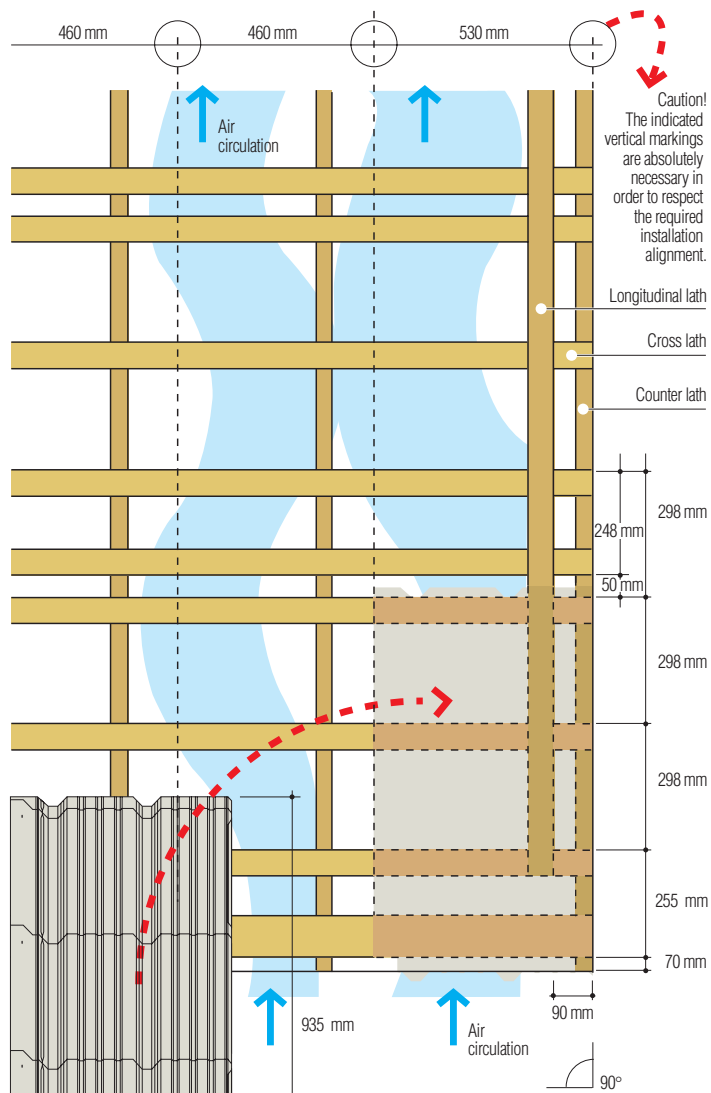
STEEL CORE



INSTALLATION:

Metal-module roof tiles for roof covering of new buildings or restoration, easy to apply without any special tools.

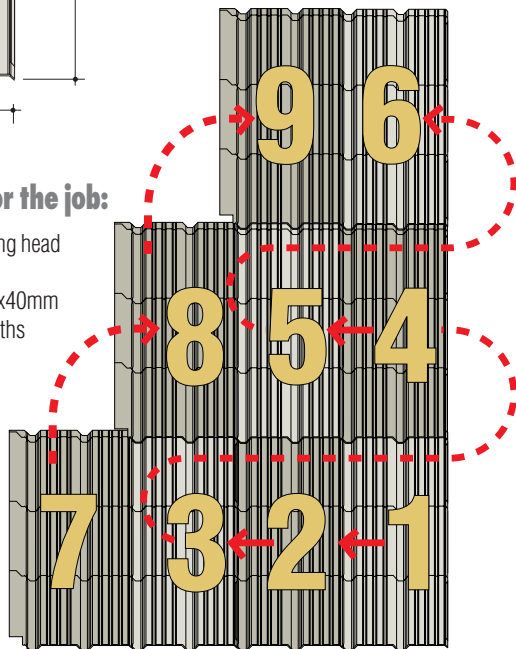




What is needed for the job:

- Drilling set with screwing head
- Trimmer or jigsaw
- Wooden cross laths 60x40mm
- Wooden longitudinal laths 60x20mm
- Roofing felt and other LM-accessories with fastening material

Installation without need of special tools



Preliminary work:

To prevent damp (condensation), spread the roofing felt on the rafters. Then fix the cross laths which will support the Clip-Tile module tiles exactly at the intervals recommended.

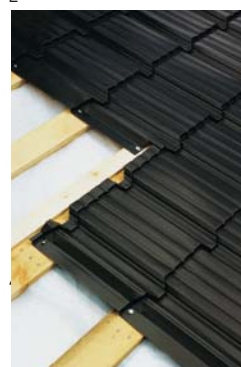
The longitudinal lath will be secured at 90 mm distance from the right-hand edge and the lower 2nd cross lath up to the ridge. Fit eaved plate (No. 33) and lower seal according to the drawing, while the inner flashing (No. 34) is to be fitted flush to the right (and to the left if necessary) eaves fascia. **Appropriate ventilation is a must in order to achieve optimal protection and insulation of your roof. That's why you should take care for perfect air flow under the modular tiles.**



1



2



3

Installation made easy

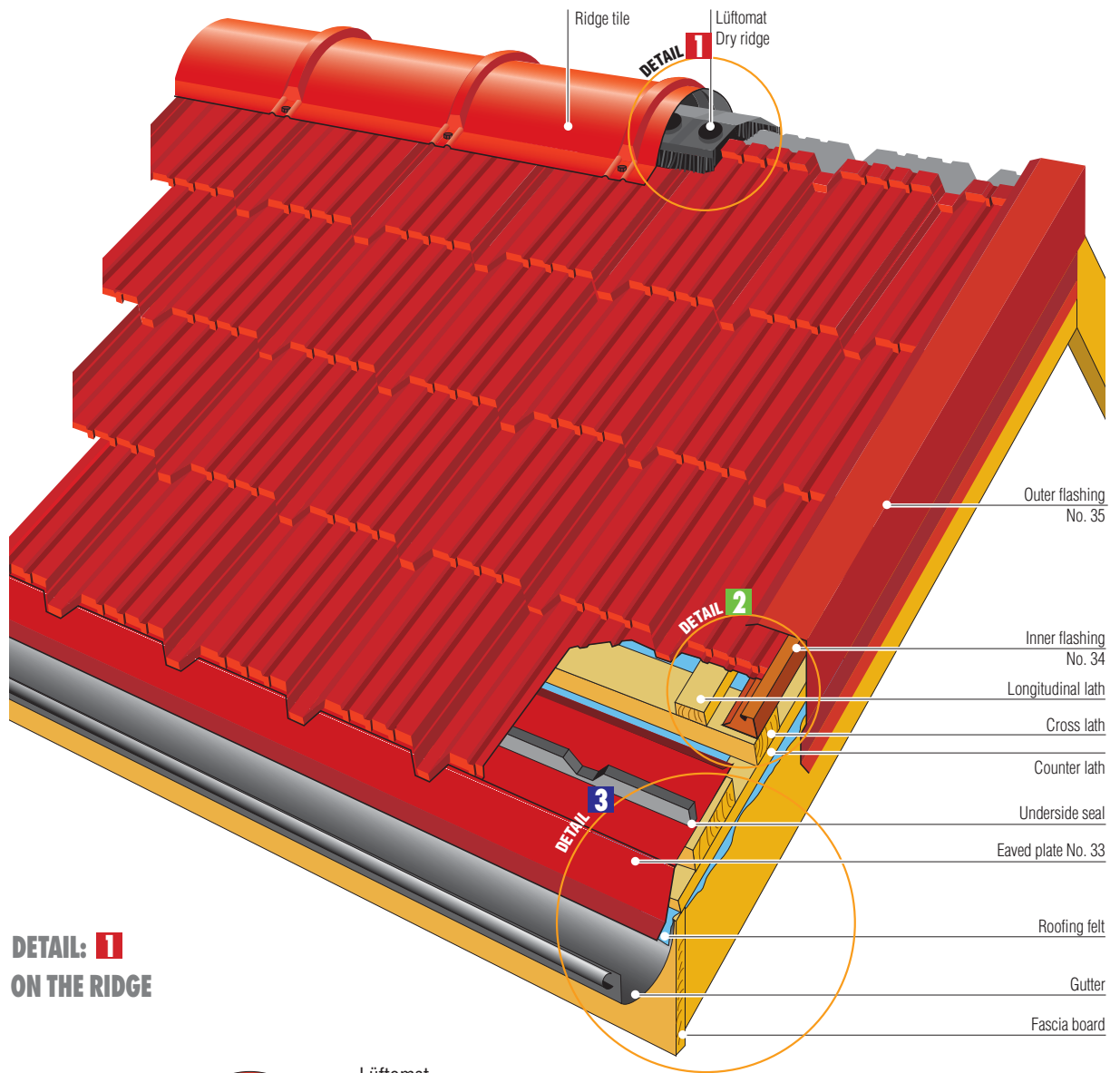
It is essential to start fitting the LM Clip-Tile Module from the lower right gutter edge. Then push the first tile under the inner flashing (No. 34) and screw it down (Picture 1).

Hook the second tile into the slits of the first one (Picture 2), push it down on the cross lath and screw tightly. The last module of the first row is to be fitted to the roof edge and to be pushed into the left inner flashing (No. 34) if necessary. Cut the tile to size by means of a trimmer (available from your dealer at low cost), or jigsaw.

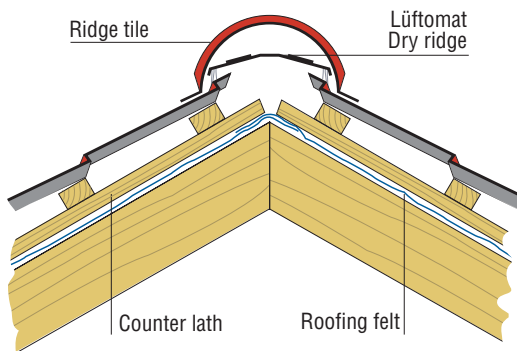
(For reasons of possible damage or corrosion, the use of a grinder is prohibited!)

The second row is fitted in a similar way, from right to left. (Picture 3).

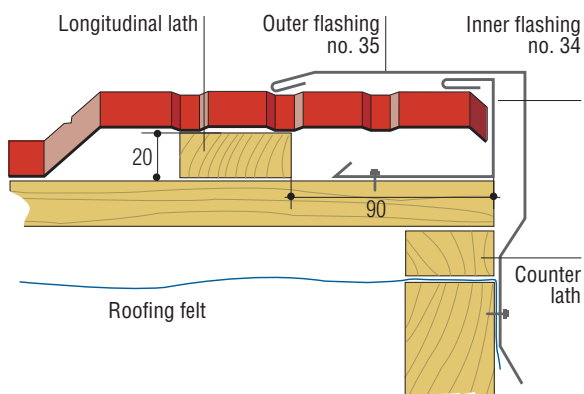
After installation of the Clip-Tile modules, put the outer flashing (No. 35) into place!



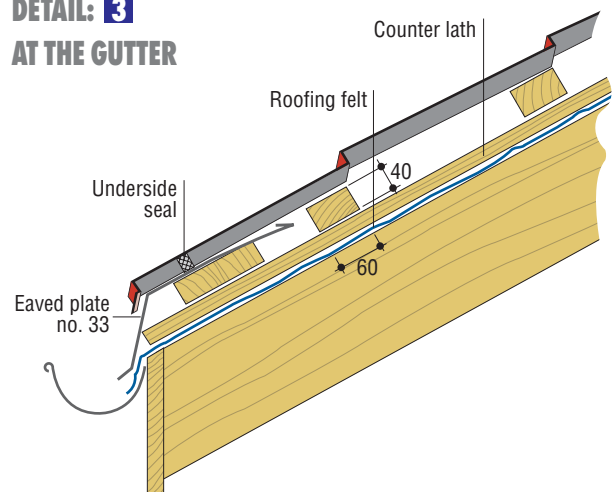
DETAIL: 1
ON THE RIDGE



DETAIL: 2
ON THE FLASHING



DETAIL: 3
AT THE GUTTER

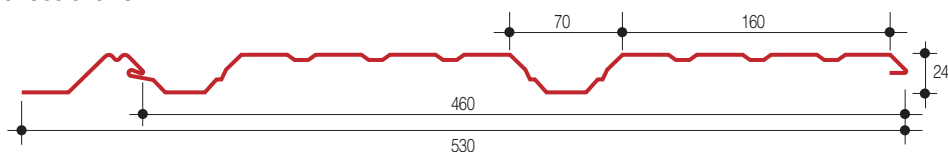


TECHNICAL DETAILS

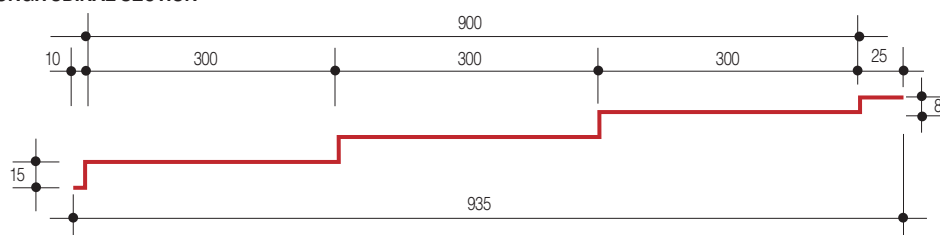
Upon request, we will be glad to supply you with a more detailed description of our products as well as the technical data thereof.

OUTER DIMENSIONS L x W	935 x 530 mm
USABLE SURFACE L x W	900 x 460 mm
SURFACE COVERAGE	0.414 m ²
MINIMUM ROOF PITCH	10.0° = 17.4%
FASTENING	Clip Fix 4 ⁶ x35 4 pcs./ module

CROSS-SECTION



LONGITUDINAL SECTION



MATERIAL	COATING	METAL THICKNESS mm (Weight kg/m ²)	
		0.50	0.60
STEEL	PURLUX	50 μ	● (5.68)
COPPER			● (7.81)

THE LM CLIP-TILE PANEL LIGHT AND EASY TO HANDLE

- 6 tiles patterns:
- 2 horizontally
- 3 vertically arranged



LM ACCESSORIES

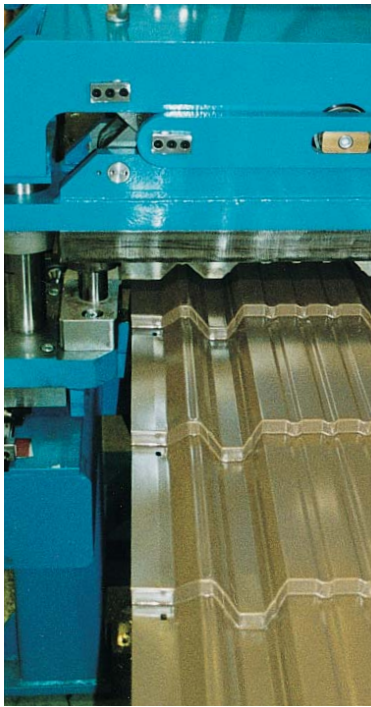
Along with the profiled pan tile we offer a comprehensive line of accessories, such as ridge course, ridge caps, eaves plates, seals etc, as well as all necessary fixtures and safety items. (see our 'Accessories' catalogue)



www.luxmetal.com

COLOURS

STEEL PURLUX 50µ (0-10 / 5-50)		
BLACK	LM 015 P	
ANTHRACITE GREY	LM 035 P	
BRICK RED	LM 742 P	
BORDEAUX RED	LM 747 P	
BROWN	LM 320 P	
GREEN	LM 110 P	
GREY WHITE	LM 9002 P RAL 9002	
WHITE ALUMINIUM	LM 9006 P RAL 9006	



Quality and reliability since 1990

LUXMETALL BELGIUM SA have been producing profiled sheets and metal roofing tiles since 1990. Millions of square metres of produced and installed profiling are proof of our reliability and experience. Our products are exported to most European countries and far beyond. Additionally, they have been thoroughly tested and comply with specific local requirements as defined in numerous countries and locations.



Liability

Given that climatic conditions, legal regulations and work methods may vary from country to country, the data published herein is for information purposes only. Neither the manufacturer nor the various suppliers can be held responsible for reliability of material or for installation thereof. We accept no liability for damage arising due to faulty storage and/or transportation or as a consequence of unprofessional or incorrect installation.



LM recommends:



the coating of the future

- extremely weather resistant
- smooth and therefore dirt-repelling as well as
- scratch and corrosion proof
- available in 8 fashionable colours

Colour shade discrepancies:

The colours shown printed here may differ slightly from the real life PURLUX colours. For this reason, we recommend that you request our genuine colour shade sampler.



Z.I., Avenue de Norvège
 B-4960 Malmedy
 Tel.: +32 (0)80 79 10 70
 Fax: +32 (0)80 79 10 71
 www.luxmetall.com
 E-Mail: info@luxmetall.com